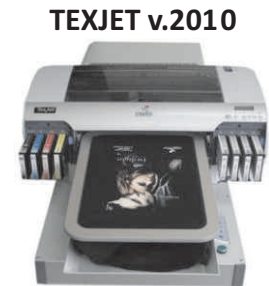


Subject: TEXJET v.2010 – Improvements

Our strategic choice is to constantly improve our TEXJET printers and develop solutions that will offer more customer satisfaction and increased reliability. Even though our TEXJET printer is already well known as a reliable and a great value-for-money solution amongst competitive products of its range, we believe that there is more to do to enhance the presence of TEXJET in the market. For these reason we proceeded with **improvements and changes which add more value** and we believe will bring our TEXJET printer even higher in the potential customer's list and in the end increase your sales.



The TEXJET v.2010 will be available in February 2010 and replaces the current model.

Quick info about the new Texjet version

- ¾ Supplied with **New Texjet RIP** software offering:
 - Simplified layout
 - **White layer preparation** without the need of Photoshop
 - **Cost calculator standard**
 - **Postscript standard**
 - **T-Shirt table templates**
- ¾ **Frame Table as standard**
- ¾ Hardware enforcement – **100% Registration**

The new version will **include as standard the following items** that were sold extra previously:

Item	Older Price
Cost Calculator	280
Postscript support	400
Frame table	425
Total	1.105

Scroll down to the next page to see highlights of the changes-improvements.

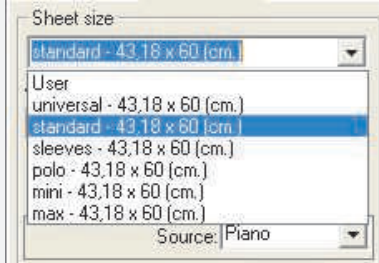
POLYPRINT S.A.

Digital Printing Machines and Consumables

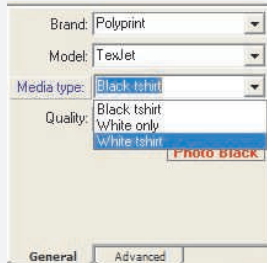
17th Noemvriou 81, Pylaia 54352 Thessaloniki GREECE
Tel. +30 2310 949366 +30 2310 246418 Fax +30 2310 246419
E-mail: info@polyprint.gr Web: www.polyprint.gr

New TexjetRIP v.2010 Highlights

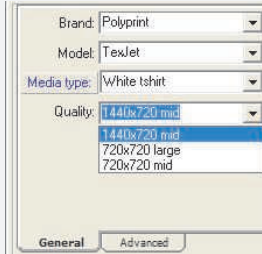
Select the t-shirt table in use and see the printable area



Select the t-shirt type White or Black

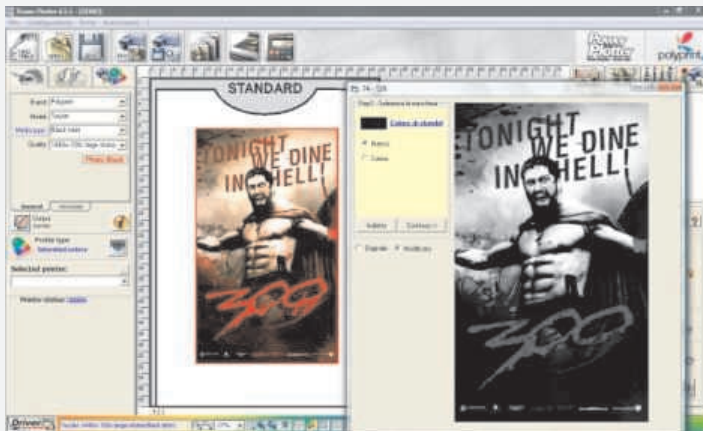


Select Print Quality (resolution)



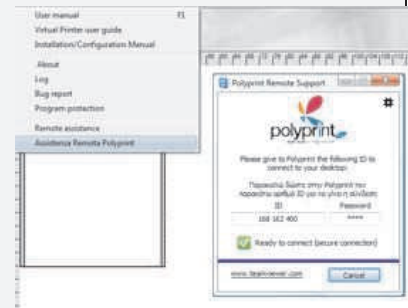
Create the white ink layer in just 1 click:

Right click on the image / create mask / set gamut and contrast



Built-in Remote Support

Help/Remote Assistance Polyprint



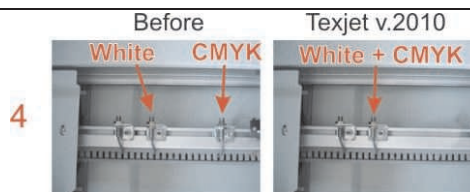
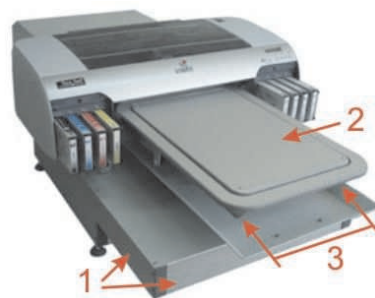
ICC profiles

The icc profiles of the previous RIP are compatible with the new TexjetRIP, and the color appearance will stay the same.

More instructional videos will be available soon on our website.

Hardware enforcement

1. The structure of the system base has been enforced by using bigger aluminum profiles which improve the overall stability of the system. The external height of the printer is increased by 4cm.
2. The Frame table will be standard.
3. The supporting bars of the t-shirt table have been strengthened to improve the solidity.
4. In combination with the new RIP, the printing of CMYK on top of white will begin from the same sensor offering **100% registration**.
*Currently available for printers connected via Ethernet, later will be available also for USB.
Previously there were 2 sensors used to move the table in 2 different positions for the 2 printing passes (White & CMYK) and the registration was depending on the correct distance between them



POLYPRINT S.A.

Digital Printing Machines and Consumables

17th Noemvriou 81, Pylaia 54352 Thessaloniki GREECE
Tel. +30 2310 949366 +30 2310 246418 Fax +30 2310 246419
E-mail: info@polyprint.gr Web: www.polyprint.gr